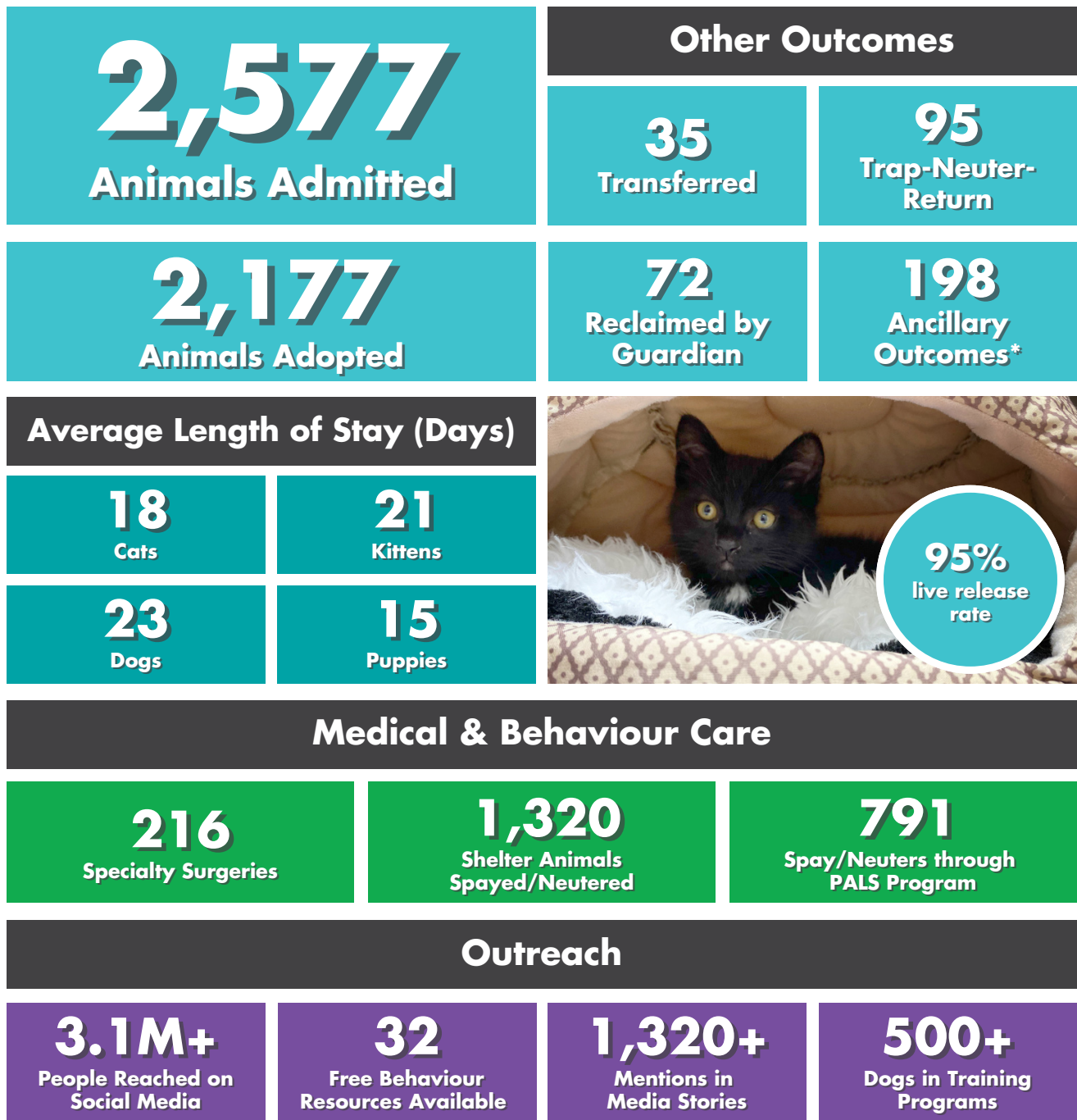


# 2021 IMPACT REPORT



## WHAT WE DID



\*Ancillary outcomes include deceased on arrival, humane euthanasia, unassisted deaths, and animals continuing in care at the end of December 2021.

# HOW YOU HELPED

**250+**  
Volunteers

**11,000+**  
Hours Volunteered

**718**  
Animals Fostered



## Donations

**26,000+**  
Donors

**\$4.4M+**  
Total Donations Given

**\$172**  
Average Gift

**\$62,800+**  
Monthly Donor Gifts

**~1,400**  
Tribute/In Memorial  
Gifts Made

## DID YOU KNOW...

- every EHS pet is spayed/neutered before they are adopted and go to their forever home?
- EHS has been a community leader in animal welfare since 1907 (that's 115 years!)
- you can shop online through our Bingo's Pet Shop and support EHS from the comfort of your own home?
- over 60% of EHS' revenue is from generous gifts from our community?
- a gift of \$500 covers the average cost of a stay for one animal, including medical treatment, spay/neuter surgery and vaccinations, behaviour rehabilitation, and daily necessities?